

Arrowbear 1st Intermediate Session 2017

Camp Information Packet



Session Dates: July 9th-22nd

Dear Camp Family:

Welcome to 1st Intermediate Session at Arrowbear! We are delighted to have you join us this summer. This packet contains important information regarding camp; please read it thoroughly.

We have a great turn out for the session, but there is still space available-spread the word!

Your arrival time will be emailed to you on

June 26th and will fall between 1:00 and 4:00pm.

Please give us a call if you have any questions.

Looking forward to seeing you!

Happy Camping,
The Arrowbear Team



Packet Contents:

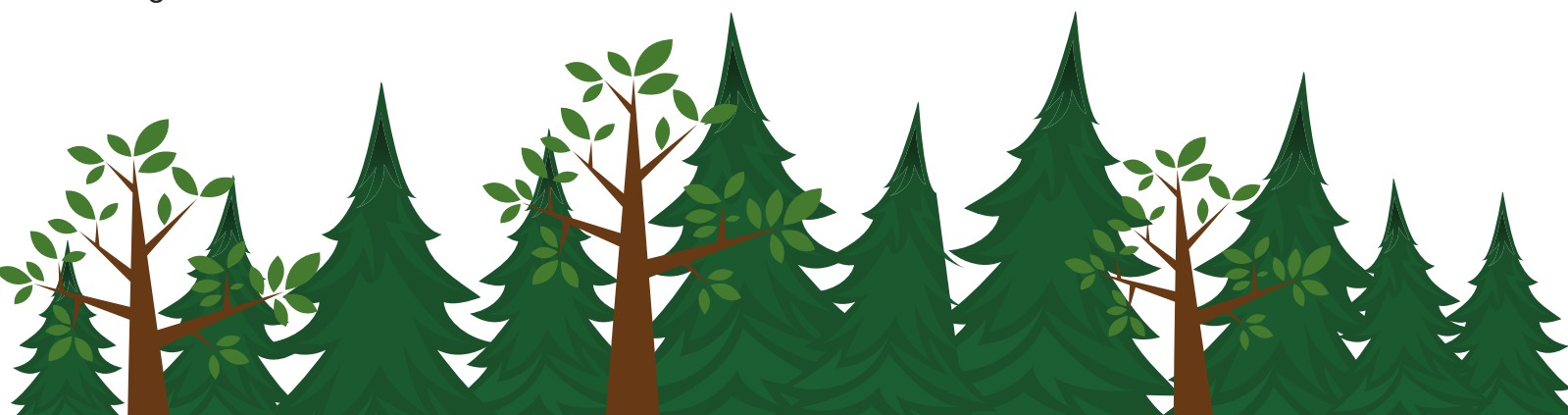
- Pre-camp Checklist
- Arrival and Departure information
- Directions to camp
- Tuition Balance and Scholarship Information
- Medication Information
- General Camp Information Covering:

- Auditions
- communication policies
- photos and group roster (the 'note')
- snack bar and camp store
- sleeping arrangements
- visiting policies

- Packing List



Information at a Glance:

- Camp office phone: 909-867-2782
- Larke's cell phone: 562-225-7766
- July 1st: session balance and health form due
- July 9th: Arrival- check email June 26th for timing
- July 22nd: Pick up day- 5pm concert
- Camp's mailing address: PO Box 180, Running Springs, CA 92382
- Camp's physical address 33500 Music Camp rd, Arrowbear lk, CA 92382





Pre Camp Checklist

- Balance paid- due in full by July 1st
 - Packing list double checked
 - Online Health Form completed and up to date
 - Attn: Campers who attended in 2016- please check that your health information is current and that your musical questionnaire is up to date :)
 - Medications properly labeled and ready to turn in
- 
- 

Arrival and Departure Information

First Day of Camp- July 9th- check email June 26th for drop-off time

Due to limited parking, we assign arrival times based on enrollment date. If you arrive to camp early, please head back into town for a nice cup of joe or a yummy brunch at a local diner such as Blondie's Grille.

Last Day of Camp July 22nd- Final Concert 5pm:

The Final Concert will be held at 5pm on campus. Guests may arrive anytime after 3:30 pm to visit and load luggage. Feel free to bring a picnic dinner to enjoy during the concert. Please do not arrive early as our program will still be in session and the front gate will be closed.



Parking

Final concert parking will be stacked, filling every available area of camp starting with the areas farthest from the entrance. Camp staff will be available to direct- look for the folks in the orange vests. If you wish to be closer to the exit, please arrive closer to concert time. Thank you in advance for being patient with our parking system.

Please, for our legal compliance and safety, no dogs are allowed on campus, except for registered service dogs.

Carpool

If you are interested in carpooling, please let us know and we will email your name, contact info, and location to everyone on our 1st Intermediate roster 2 weeks before camp begins.

Driving Directions to Camp

Physical address: 33500 Music Camp Rd, Arrowbear Lk, CA 92382

From I-210 in Highland, take HWY 330 towards Big Bear. After winding up the mountain road, continue through the small towns of Running Springs and Arrowbear.

Turn right at the second Arrowbear Drive (on the corner you will see a chain link fence with many advertisement posters, as well as Blondie's Bar and Grille).

If you reach a sign for Green Valley or Snow Valley Ski Resort, you have gone too far.

Stay to the left of the small pond (it may be dried up by June) and continue up Music Camp Road until you reach the camp. We have a large, green, and brown "Arrowbear Music Camp" sign at the entrance to the camp.

Follow signs to the check-in station.



Tuition Balance and Scholarship Information:

Tuition Fees

Your remaining balance must be paid by July 1st.

Scholarships

If you paid in full for camp and then received a scholarship, your scholarship check will be handed to you during check-in. If a parent or guardian is not present to pick up the check we will mail it the following day.

If you received a scholarship from an organization other than Arrowbear Associates, please make sure camp has received all necessary paperwork.

Medications

All medications must be turned into the Camp Health Supervisor at check-in. This includes over the counter medications and is for legal compliance and camp safety. Medications **MUST** be in their original, labeled containers or they will not be administered. If you transfer pills into daily pill containers, make sure to provide the original prescription bottle.



General Camp information:

Auditions

Each camper will meet with our music staff for an audition. This will help our teachers understand the needs of each camper. If you are currently working a solo and scales, please bring the music. Do not worry about the audition. Camp is a very supportive and noncompetitive environment. :)

Communication with campers-

Old fashioned snail mail

Campers love to receive mail while at camp!

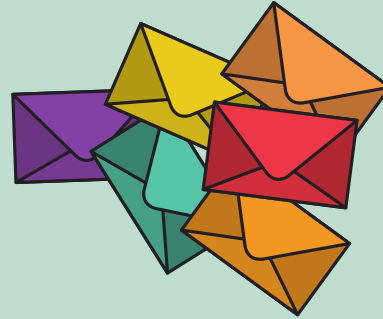
Please mail to-

Camper's Name

c/o Arrowbear Music Camp

PO Box 180

Running Springs, CA 92382



Alternatively, family and friends are welcome to leave mail with the camp office to be placed in the camper's mailbox on a specific day.

Any mail that arrives after the session ends will be returned to sender.

One way emails through UltraCamp

Log into your ultracamp account and choose "additional Options" on the upper right hand side. Choose "Email a camper" from the drop down menu. Emails will be printed and placed in the campers' mailbox daily.

Messages

Messages received via email, text, or phone call will be placed in the campers' mail box daily.

Cell Phones

Because the campers will be very busy playing music, making friends, and enjoying the camp atmosphere, we highly recommend that you leave your cell phone and other electronic devices at home.

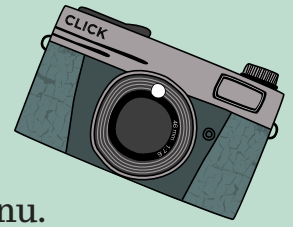
We truly believe that camp is a more fulfilling experience for campers when cell phones are not involved. They really do distract from total involvement in the camp environment. With that said, we have done our best to find a happy medium to accommodate those who wish to bring a phone.

For campers who bring a cell phone:

- Phones must be turned in during registration.
- Phones may be checked out for use Wednesday, Saturday, Tuesday, and Friday between 3:00pm and 3:30pm.
- Campers who do not bring a phone, but wish to make a call during this time, will have access to a camp phone.

Daily Camp Photos:

Starting on Monday night (July 10th) we will upload session photos to ultracamp. Check back daily at approximately 7pm for new uploads. Log into your ultracamp account and choose "Additional Options" on the upper right hand side, then choose "Photo Gallery" from the drop down menu.



Commemorative Photo and Camp Roster (the 'note')

At the end of the session we will provide all the campers with a group photo and roster including contact information for all campers and staff. If you wish to have your contact information left off the roster, please let us know.

Arrowbear Store:

During free time we sell a small assortment of snacks and camp gear. All money must be turned in to the camp for safekeeping. A debit system will be used for purchases and the remaining balance will be returned on the last day. We accept cash, check, money order made out to Arrowbear Music Camp, or credit card through ultracamp. For a two week middle school session we recommend \$30-\$100.

To add money through credit card on ultracamp: Log into your account and click "additional options" Upper right hand side.

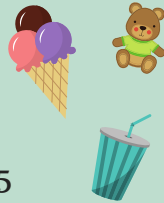
Prices-

Snacks/Soda \$1-\$4

T-shirts \$15

Sweatshirts \$25-\$30

Other camp gear \$3-\$25



The camp store will be open before and after the concert. At this time we will accept credit card payments.

Sleeping arrangements

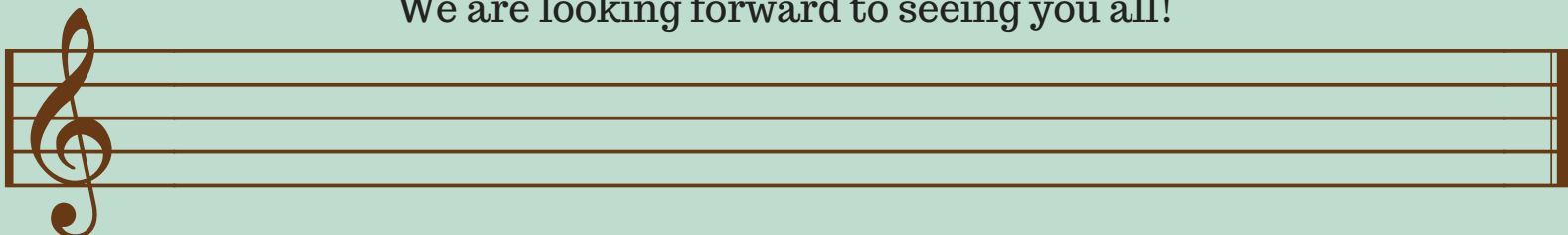
Bunks will be chosen in the evening after campers have had a chance to meet the counselors and see the sleeping areas. Friends will have no problem finding beds near each other.

Visitors

We discourage visiting as it detracts from the camp experience. Visits are only permitted with prior permission from the camp office. The camp day to day activities may vary from the posted schedule.

Thank you

We are looking forward to seeing you all!

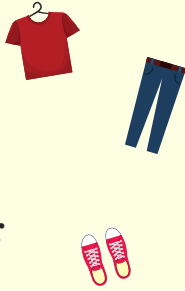




Packing List

Clothing

- Enough comfortable outdoor clothing for 2 weeks-
Example:
- Jeans/ long pants
- Shorts
- T-shirts/ tank tops
- Sweat shirt/ sweater
- Pajamas
- Socks
- underwear
- Closed-toe shoes (hiking boots/ tennis shoes)
- Bag or collapsible hamper to hold dirty clothing
- Concert clothes: slacks, khakis or skirts; blouse, polo, or other collared shirt



Music related

- Instrument
- Pencils- soft lead
- Eraser
- Clothes pins to hold music
- Any items you may need for your instrument: mutes, reeds, extra strings



Misc.

- Reusable water Bottle (or purchase an aluminum camp water bottle here for \$12)
- Flashlight or headlamp



Toiletries

- Towel and washcloth for shower
- shower sandals (flip flops)
- Toothbrush, toothpaste, and floss
- Shampoo and soap
- Sunscreen and chapstick
- Bug repellent
- Any other personal items you may need



Optional items

- Fitted sheet (to cover vinyl mattress)
- Blankets
- Swimsuit
- Pool towel
- Hat
- Sunglasses
- Hiking boots/ hiking gear
- Sandals
- Snack food in a labeled container
- Extra music for practice/ performance with accompaniment if needed
- Stamps and envelopes
- White clothing for tie-dying
- Camera
- Books/ magazines
- games
- drawing supplies



Bedding

- Warm Sleeping Bag- temps may drop below the 40's- please pack accordingly
- Pillow

Make sure to label all belongings with the camper's name. Aside from your instrument, please leave all valuables at home. Arrowbear Music Camp will not be held responsible for lost money or valuables.

